

CULTURE | HERITAGE | ART

GREENBRIER

VALLEY QUARTERLY



BUBBA WATSON

SUMMER FESTIVAL GUIDE

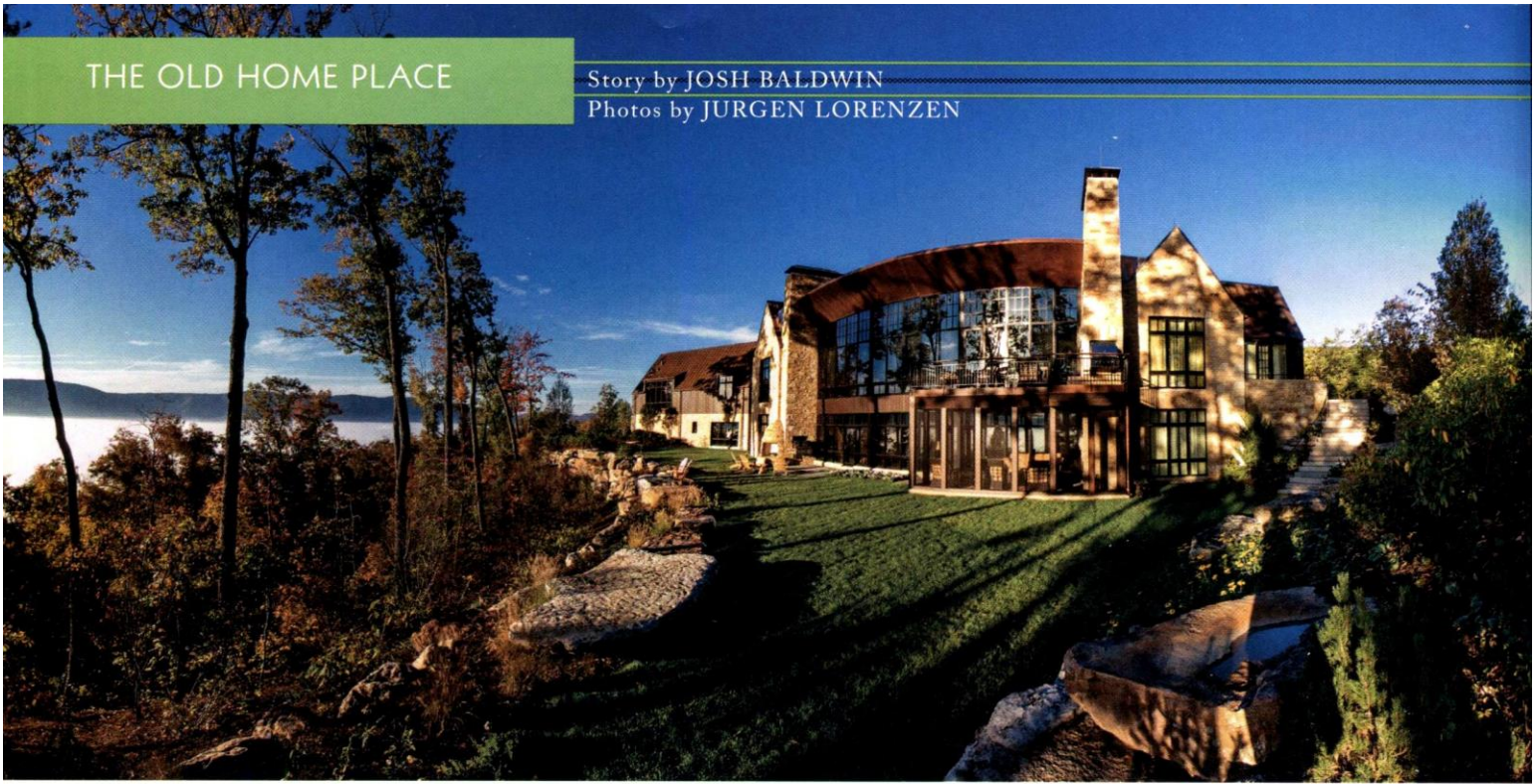
Greenbrier Pastry Chef
Jean Francois Suteau

LARRY TWO FEATHERS BROWN

\$4.00

SUMMER 2015

Issue #41

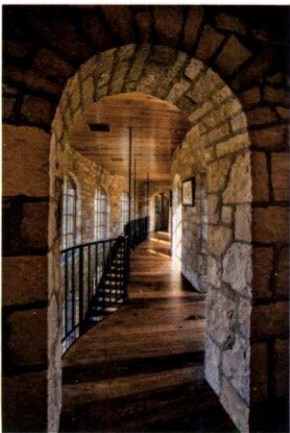


Timeless Home Design Meets Mountain Majesty at The Greenbrier Sporting Club

When Dean Huntley's phone rang at her Hilton Head Island, South Carolina office a few years ago with the offer to design a mountain home in West Virginia for her friends and clients Michael and Stephanie Reardon, she jumped at the chance. Through her work on their other South Carolina properties, the interior designer had become close to the family from Ohio, and relished the opportunity to challenge herself.

The Reardons have been coming to The Greenbrier since the 1980s, long before the casino, golf tournament, and new homesites. The Sporting Club had been selling luxury mountain property for a decade before Michael strolled through The Greenbrier hallways and slipped into the lobby sales office. He asked a few questions, then went up onto Greenbrier Mountain to view a few lots. An avid golfer, Michael stepped out onto a beautifully situated homesite overlooking The Old White TPC golf course and the entirety of The Greenbrier resort. He decided to build a home and so the property was under contract by the end of that day.

"We've been coming to The Greenbrier for 40 years," says Michael, a businessman from Wooster, Ohio. "We have been to nearly every resort in America and there is only one Greenbrier. It's the people that make it what it is."



New-world design meets old-world craftsmanship at The Sporting Club

Once the Reardon's put their homesite under contract, they contacted George and Mitch Acock of Acock Associates in Columbus, Ohio. Like Huntley, they had developed a friendship with the family over the years.

"We didn't really provide George and Mitch with any ideas," says Stephanie. "They came up with some concepts we loved and we just went from there."

"I'm not sure the Reardons knew what they were going to get," laughs Huntley. "They just sort of strapped in and went for the ride."

"The concept," says Acock from his Columbus, Ohio office, was to really take advantage of these magnificent views, but in order to do that we had to build into the mountain, making sure the arrival court was 'on top,' so to speak."

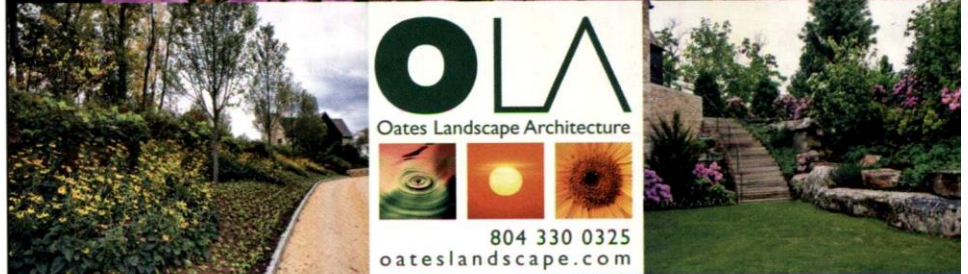
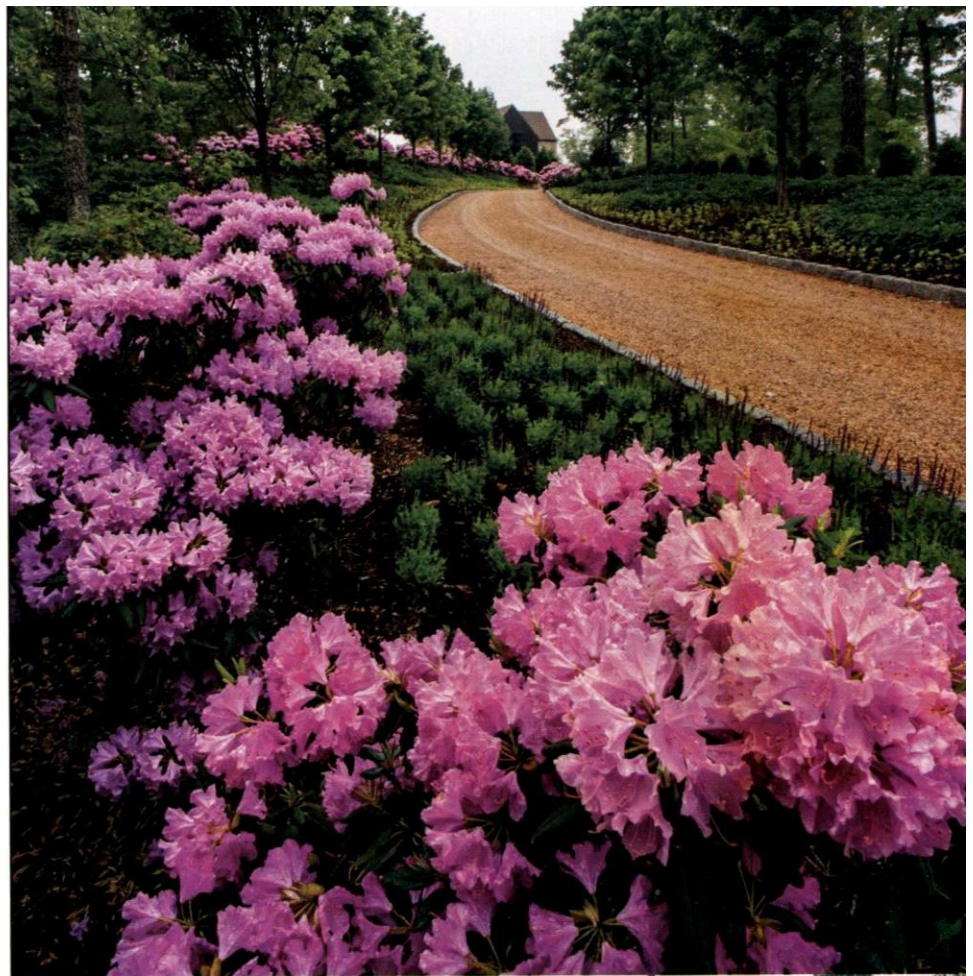
Most important, says Acock, was the desire to tell a story through the design of the house and to create something that could have been waiting for the Reardons to stumble upon for the last hundred years.

Peter McKinney of Agsten Home Builders, (the constructors of the property), quickly points out that local stonemason Joe Kaminsky and his Solid Masonry crew placed over one million pounds of stone on the outside and inside of the home.

"It's really exceptional stone work," says McKinney, who as former VP of Development for The Greenbrier Sporting Club oversaw the construction of The Summit Lodge and other club amenities. "For the stone barreled and groined ceilings, we built forms to the shape of the ceiling, and then Joe came in behind us and placed the stones upside down on top of our forms."

Indeed, as soon as you step through the front door, you're greeted by the medieval-style arched stone hallways and stone-vaulted ceiling built of Texas limestone and the warm tones of reclaimed oak flooring. Wrought-iron railings and accents, by Matt Wallace of Wallace Metal Works (another local artisan), exemplify the home's focus on natural elements.

Opposite, top: The Reardon home boasts tall, floor-to-ceiling windows to take advantage of the magnificent views. Opposite, bottom: The stonework in the home, and in particular the archways, are splendid. Over one million pounds of stone were used on the project.





Clockwise from left: Michael and Stephanie Reardon on the steps of their Greenbrier Sporting Club home; The Master Bath features a rare find in its green-tinted onyx countertops; the Master Bedroom offers a private fireplace with custom surrounds and direct access to the rear patio; the Great Room, featuring spectacular views over the Allegheny Mountains; the rear of the home at night shows off its contemporary style; the home's kitchen features reclaimed oak flooring, a paneled ceiling, custom cabinetry and a large eat-in island with granite countertops.



"If you look around the home," explains McKinney from the upper great room, "the materials are simple and elegant—for the most part wood, stone, steel."

The great room is unequivocally the centerpiece of the home, and it exemplifies Acock's charge to feature the magnificent view-shed. Twenty-plus foot floor-to-ceiling windows, each one custom-fit to the home's radius, offer views of the surrounding Allegheny Mountains and the valley below.

Huntley says therein lay the challenge for a designer. "George and Mitch did an incredible job siting the house," she says. "I needed to figure out how to accentuate and not cover up this stunning vista. In essence, I needed to 'frame the painting.'"

While open, the great room's layout creates multiple living spaces, including a dining area that features a chandelier by Paul Ferrante of Los Angeles, imagining a tree branch in forged iron and bronze. The fireplace is one of eight located throughout the home, each with a custom stone surround carved on-site by stone sculptor Frank Anjo. The room's Baswaphon acoustic ceiling is the same found in concert halls across the country.

The home's kitchen features elegant Pearla Venato quartzite counters, and custom cabinets of walnut and alder, by Ralph Fallon of Columbus, Ohio who built all of the cabinets and doors for the home. The arched, oak-paneled ceiling with exposed beams, juxtaposed against stone walls creates a feel of the French countryside, while professional-grade stainless steel appliances ensure the chef will want for nothing. A gorgeous tiled backsplash, designed by Huntley herself, adorns the wall, featuring accents by Rocky Mountain Hardware. The eat-in counter-space provides extra room to accommodate large family gatherings.

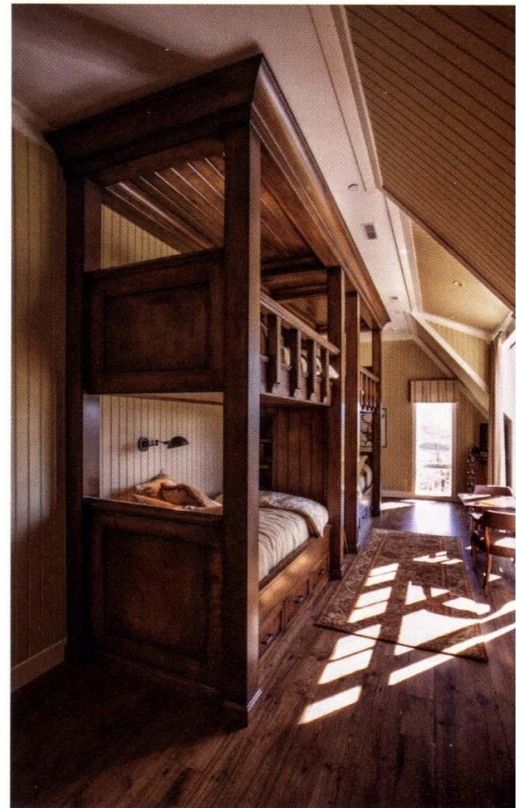
"Architecturally the house just flows," says Huntley. "My job was to make sure everything worked from a color standpoint. Having worked with the Reardons before, I know they love color. My goal was to make this house a home, to make sure it didn't feel cold and sparse, but rather warm, fuzzy, and comfortable. That's accomplished through the use of colors and textures, through the stain of the wooden floors and the design of the rugs and so forth."

Each of the home's bedrooms has its own tone and character, the master bedroom being no exception. Spacious and well lit, the master boasts hardwood floors and a stone fireplace, while the luxurious ensuite bath features French limestone floors and a center island for ease of storage. Green onyx adorns the tub and countertops.

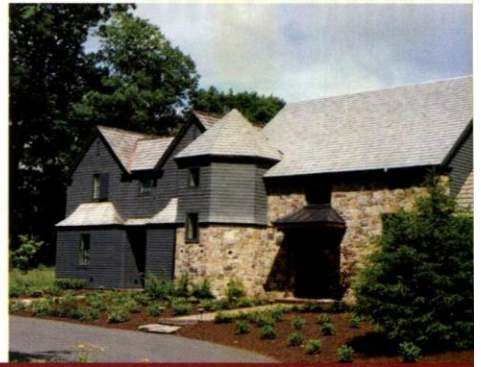
"We wanted the color palette to match the mountains," says Huntley of the hard-to-source, fragile onyx. "It's very difficult to find in this color because it's often too orange-ish. But we were able to source it and it turned out beautiful."

Huntley also points out the polished nickel hardware throughout the bathroom. "It's kind of like jewelry," she explains, "in that it's very special and unique."

Each of the other three bedrooms retain their own unique character and at the far end of the house, opposite the master, you'll find the bunk room, which features separate "boys and girls" sides, each with their own handcrafted maple bunk beds and spacious bathrooms.



Above: These luxurious bunk beds were crafted by Ralph Fallon and create the perfect space for guests and grandkids.



**Proud to be the builder of the Reardon home
and many other distinctive properties at
The Greenbrier Sporting Club**

AGSTEN
HOMEBUILDERS

A wholly owned division of Atlantic Wallace LLC

AgstenBuilders.com | 304.536.0116 | WV# 053657

The lower level of the home mimics the floor above. Stone stairs repurposed from an Ohio State University campus building lead down into the lower great room, which features a bar, small kitchen, and access to the rear patio and built-in grill. The lower level is home to guest bedrooms, the kid's play area, a large laundry and utility room, as well as a sauna and steam shower.

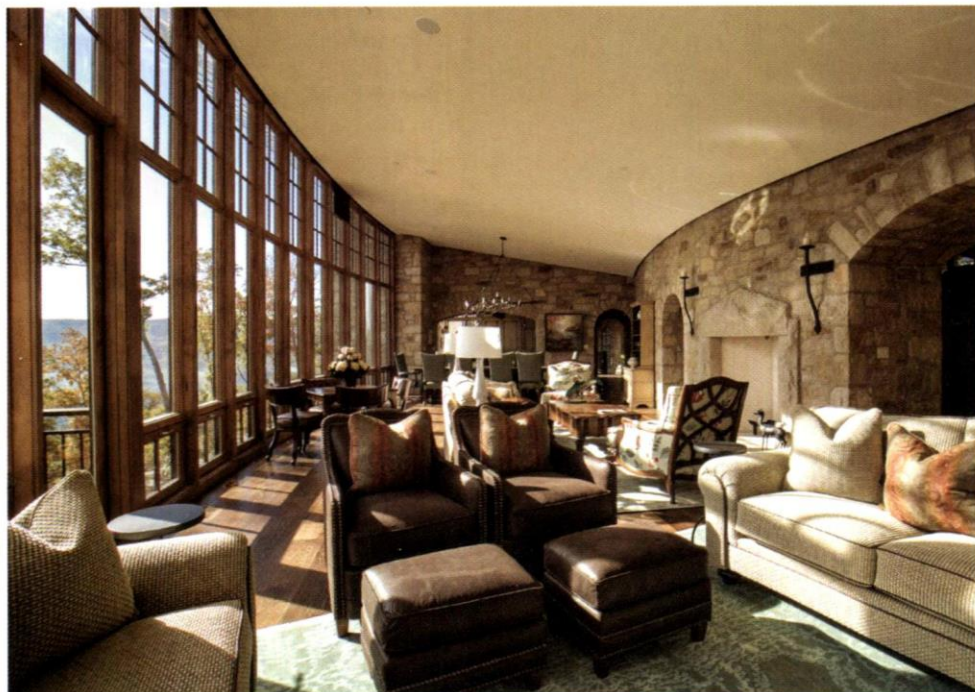
McKinney points out that, in essence, the home is designed as three two-story gabled structures spread out along the ridge. The shape is graceful, but simple. These structures house the private spaces like bedrooms and bathrooms. In between the three structures are gently curving "connectors" which provide the public space. It is in these connecting spaces that large window walls allow the view to take over.

The design for the mountain landscape is equally compelling and dramatic —complementing the house design while celebrating the numerous view-sheds and intimate spaces throughout the property. Tony Oates of Oates Landscape Architecture in Richmond, Virginia, developed the overall plan which is based upon a landscape precedent he experienced while traveling in Scotland. "This notion of the "house on the hill" is very powerful to me," said Oates. "Such a grand home in this dynamic landscape deserves the ceremonial experience of the entry drive and what better way than with an allee of Red Maples." Complementing the Red Maples are numerous hillside groupings of flowering shrubs, trees, and perennial flowers.

In selecting the plant palette, Oates worked closely with Rudy Horst, the landscape contractor, to choose plants that would thrive in the extreme winter climate and also be resistant to the large deer population in the area.

The entry experience is highlighted by retaining walls and limestone steps which present the front door with elegance. A lush lawn area dominates the rear of the property while a bluestone terrace situated around an outdoor fireplace provides a perfect view of the private hillside of the master bedroom including large natural boulders that become seats in the garden. Numerous varieties of plants provide a kaleidoscope of color throughout the seasons.

From the arrival court out front, describing the huge boulders that Joe Kaminsky collected and brought in to provide a guardrail for the driveway, McKinney looks around and says with a hint of a smile, "Mike and Stephanie Reardon were wonderful clients and we all are thankful for the opportunity. I don't think we will ever build a house quite like this again."



The Great Room features a Baswaphon acoustic ceiling, the same found in concert halls across the country.